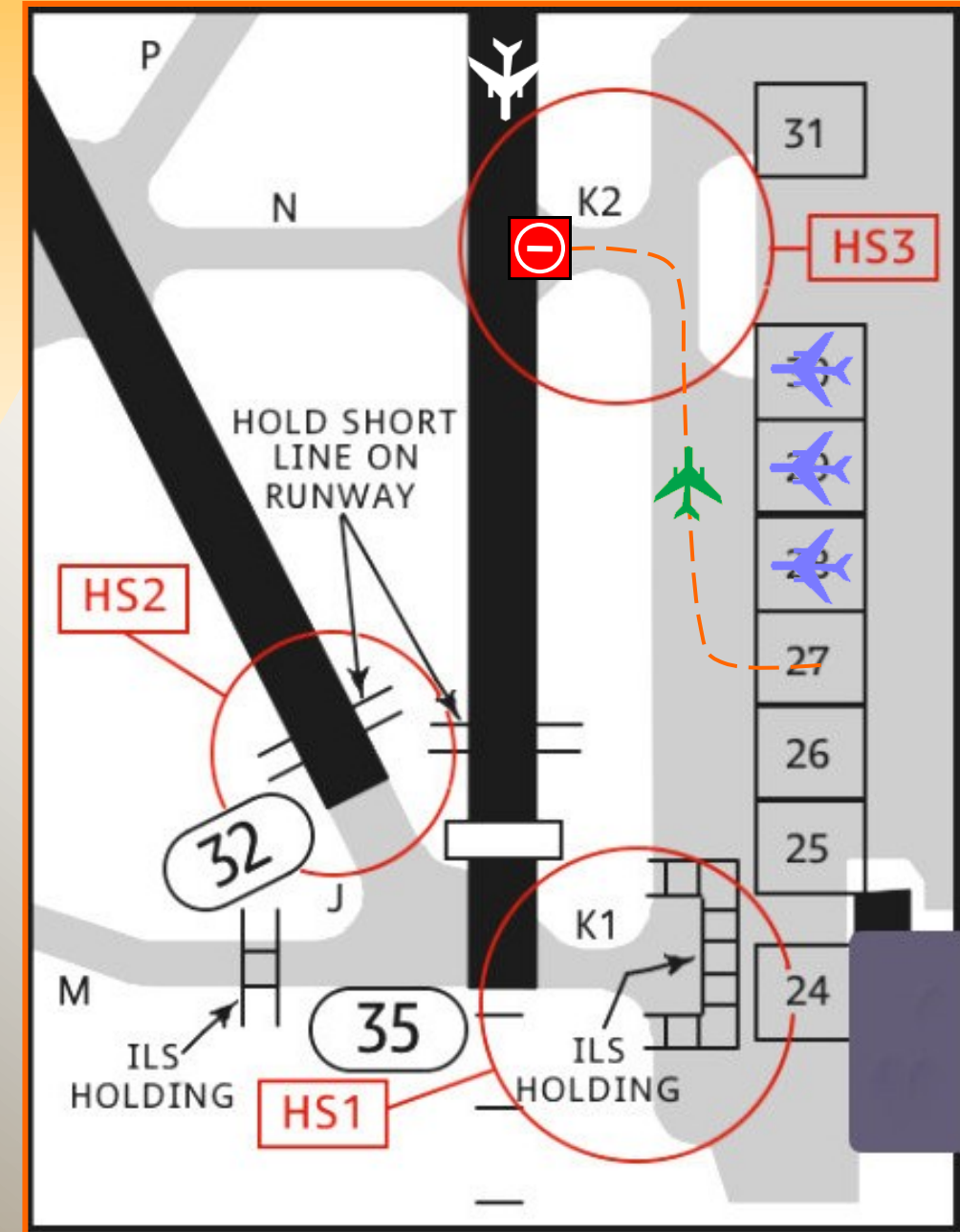
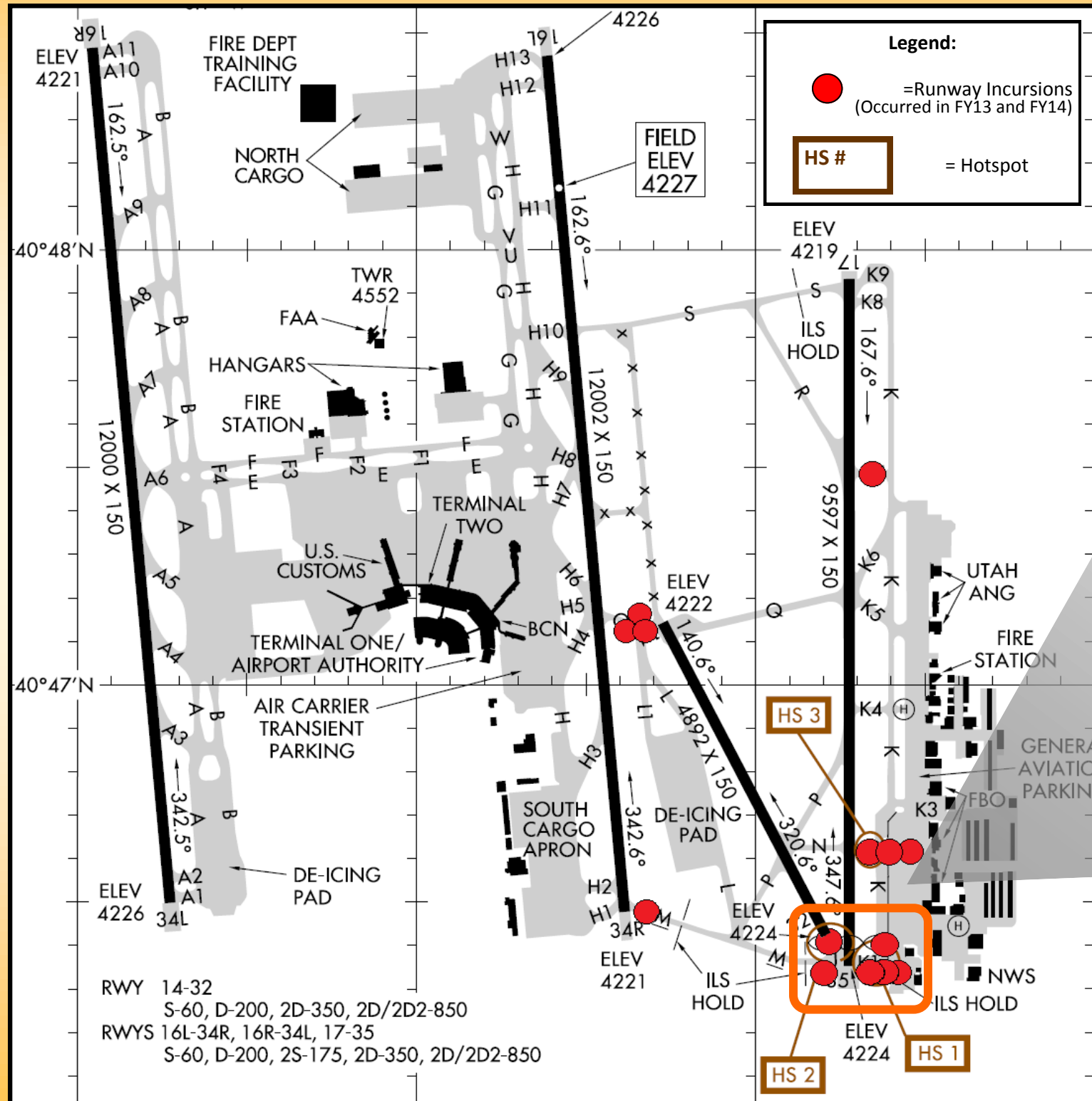


Kaution on Kilo!

Salt Lake City
International Airport

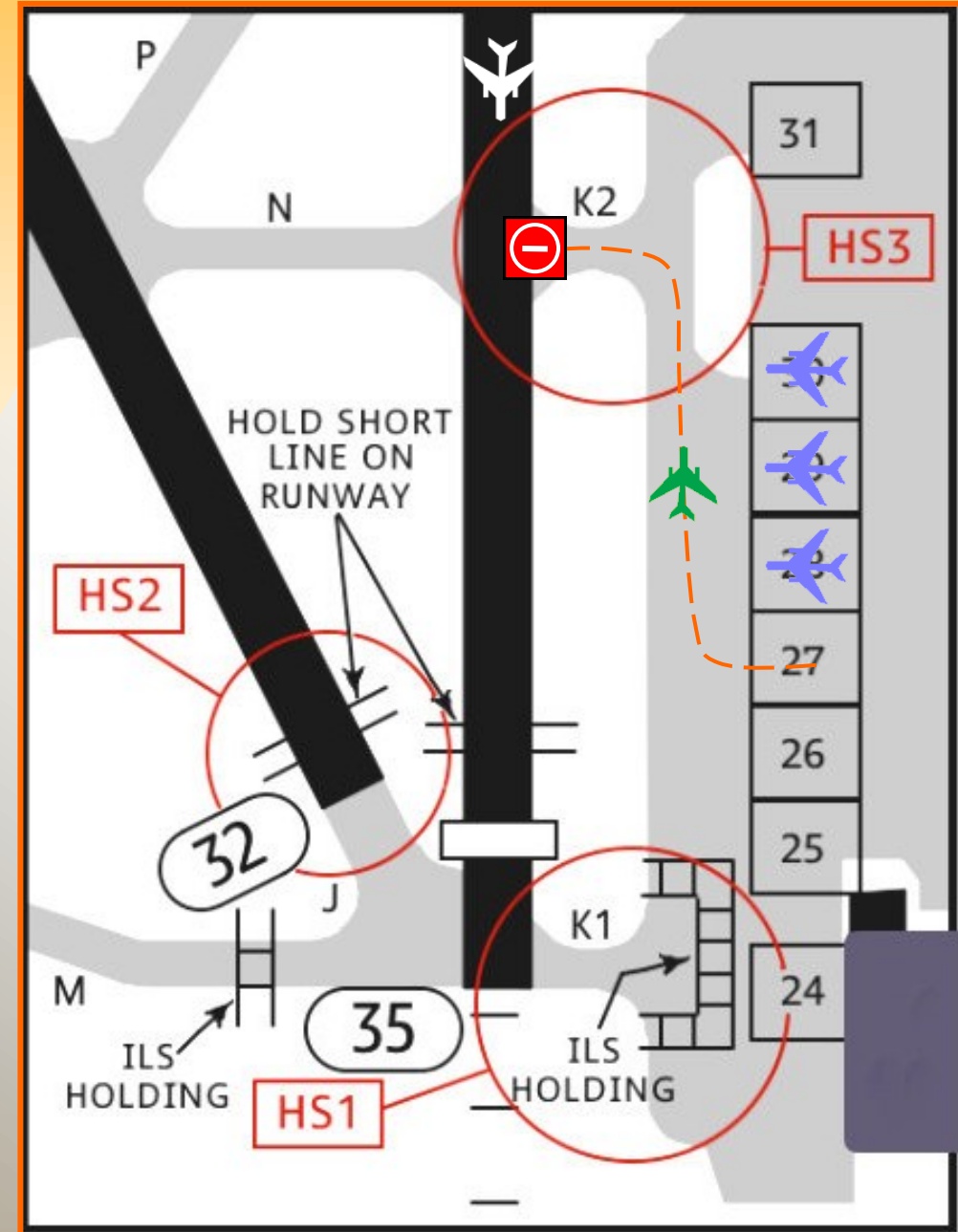
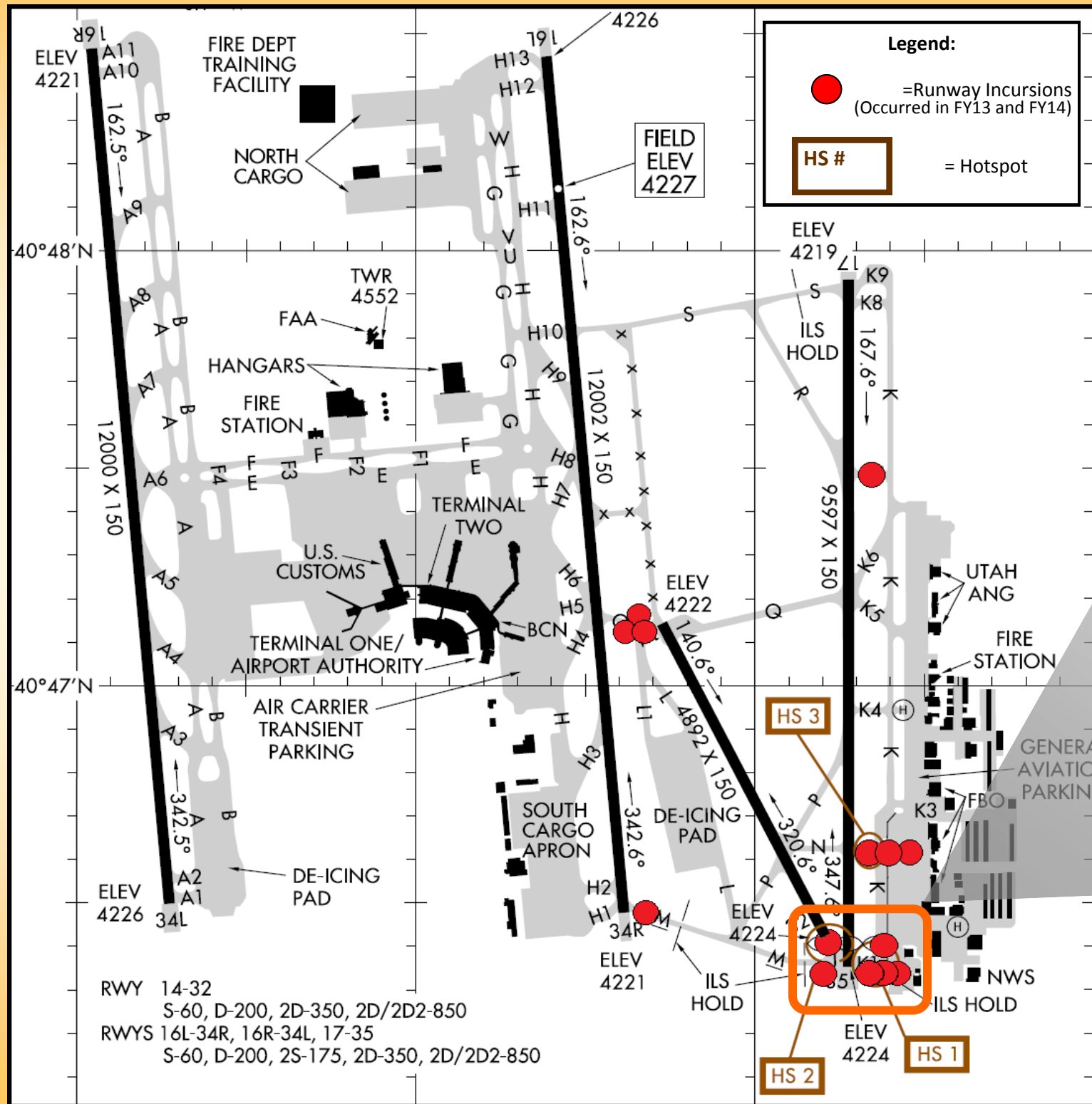


Be Kareful on Kilo ... Please!!

The southeastern portion of the airport where Taxiway Kilo and its connecting Taxiways tie in with both the ramp and Runway 35 has experienced a number of runway incursions ... especially involving aircraft taxiing out of parking spots 27 – 30.

Kaution on Kilo!

Salt Lake City International Airport



Be Kareful on Kilo ... Please!!

The southeastern portion of the airport where Taxiway Kilo and its connecting Taxiways tie in with both the ramp and Runway 35 has experienced a number of runway incursions ... especially involving aircraft taxiing out of parking spots 27 – 30.